

## Inductive Proximity Sensors



### DC Inductive Sensor - Connector Type

TECHNICAL SPECIFICATION	
Type	DC PNP/NPN,NO/NC
Operating voltage	10 - 30V DC
Current consumption	<15mA DC
Output voltage drop at maximum load	<2V DC
Maximum load current	200mA
Sensing distance ( $S_s$ )	As per standard
Real sensing distance ( $S_r$ )	$S_s \pm 10\%$
Hysteresis	5 to 15% of $S_s$
Protection class	IP 67
Operating temperature	0 -70° C
Standard target	M8 - 8 x 8 x 1 mm made of mild steel
	M12 - 12 x 12 x 1 mm made of mild steel
	M18 - 18 x 18 x 1 mm made of mild steel
	M30 - 30 x 30 x 1mm made of mild steel
Correction factors approximately	SS-0.7, Al/Brass-0.4, Copper-0.3

### DC Inductive Sensor - Cable Type



TECHNICAL SPECIFICATION	
Type	DC 2 WIRE, NO/NC
Operating voltage	10 - 30V DC
OFF state current	<2mA DC
Voltage drop at maximum load	<4V
Maximum load current	200mA
Sensing distance ( $S_s$ )	As per standard
Real sensing distance ( $S_r$ )	$S_s \pm 10\%$
Effective sensing distance ( $S_e$ )	$0.81 S_s = S_e = 1.21 S_s$
Hysteresis	5 to 15% of $S_s$
Protection class	IP 67
Operating temperature	0 -70° C
	M12 - 12 x 12 x 1 mm made of mild steel
	M18 - 18 x 18 x 1 mm made of mild steel
Correction factors approximately	SS-0.7, Al/Brass-0.4, Copper-0.3

## Inductive Proximity Sensors



### AC Inductive Sensor

#### TECHNICAL SPECIFICATION

TECHNICAL SPECIFICATION	
Type	AC 2 WIRE, NO/NC
Operating voltage	24V - 270V AC
OFF state current	< 2mA AC
Max Voltage drop at maximum load	<8.5V AC
Sens: Maximum load current	250mA AC
Real Sensing distance (S <sub>n</sub> )	As per standard
Effective sensing distance (S <sub>e</sub> )	S <sub>n</sub> ± 10%
Hyst Effective sensing distance (S <sub>e</sub> )	0.81 S <sub>n</sub> = S <sub>e</sub> = 1.21 S <sub>n</sub>
Prot Hysterisis	5 to 15% of S <sub>n</sub>
Protection class	IP 67
Operating temperature	0 -70° C
Corr	M12 - 12 x 12 x 1 mm made of mild steel
Corr	M18 - 18 x 18 x 1 mm made of mild steel
Correction factors approximately	SS-0.7, Al/Brass-0.4, Copper-0.3
Correction factors approximately	SS-0.7, Al/Brass-0.4, Copper-0.3

### Analog Sensors

#### TECHNICAL SPECIFICATION

Supply Voltage	18-30 VDC
Supply Current	10 Ma
Temperature Range	25°C to +70°C
	0°C to +70°C
Degree of Protection	IP 67
Housing Material	Nickel Plated Brass & Plastic
Frequency Response	1 KHz
Load Resistance	0.1 - 500 Ohms
Sensing Distance	
M 18	1 - 4 mm
M 30	7 - 14 mm
Output	0 - 20mA OR 0 - 10mA



# SENSORS



## Inductive Proximity Sensors

### DC-Namur Sensors



TECHNICAL SPECIFICATION	
Voltage Range	5-15 VDC
Ripple Voltage	= 10%
Repeat Accuracy	0.01 mm
Temperature Range	0°C to +70°C
Degree of Protection	IP 67
Terminal	Cable 2 m 2 x 0.34 Sq. mm.
Housing Material	
Metal	Brass Nickel Chrome Plated

Max. Switching Freq. (kHz - with ohmic load)				
Size	M8	M12	M18	M30
Flush	2	1.5	0.8	0.5
Non-Flush	2	1.5	0.8	0.5

## Capacitive Sensors



### DC Capacitive Sensor



TECHNICAL SPECIFICATION	
Type	DC PNP/NPN, NO/NC
Operating voltage	10 - 30V DC
Current consumption	<15mA DC
Output voltage drop at maximum load	<2V DC
Maximum load current	200mA
Sensing distance (S <sub>n</sub> )	As per standard
Real sensing distance (S <sub>r</sub> )	S <sub>r</sub> ± 10%
Effective sensing distance (S <sub>e</sub> )	0.81 S <sub>n</sub> = S <sub>e</sub> = 1.21 S <sub>r</sub>
Hysteresis	5 to 15% of S <sub>n</sub>
Protection class	IP 67
Operating temperature	0-70°C



+91 85919 10242

raytech@raytechautomation.com

www.raytechautomation.com

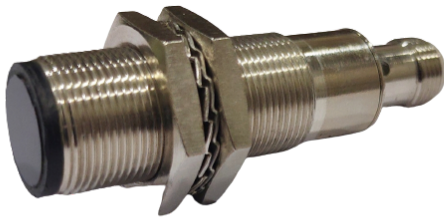
# SENSORS



## Photo Sensors



### DC Photo Sensor



#### TECHNICAL SPECIFICATION

Type	Diffused/Retro-reflection / Through beam
Configuration	PNP/NPN, NO,NC
Operating voltage	10 - 30V DC
Current consumption	<30mA DC
Output voltage drop at maximum load	<2V DC
Maximum load current	200mA
Sensing distance (S <sub>n</sub> )	Refer Ordering table
Real sensing distance (S <sub>r</sub> )	S <sub>n</sub> ± 10%
Hysteresis	5 to 15% of S <sub>n</sub>
Protection class	IP 67
Operating temperature	0 -70° C

## Magnetic Sensors



### Magnetic Hall Sensor



#### TECHNICAL SPECIFICATION

Type	DC
Operating voltage	10 - 30V DC
Current consumption	<20mA DC
Output voltage drop at max. load	<2V DC
Maximum load current	<25mA
Sensing distance (S <sub>n</sub> )	2mm
Real sensing distance (S <sub>r</sub> )	S <sub>n</sub> ± 10%
Protection class	IP 67
Operating temperature	0 -70° C



+91 85919 10242

✉ raytech@raytechautomation.com

🌐 www.raytechautomation.com

# SENSORS



## Magnetic Sensors

### Magnetic Reed Switches



Sr. No.	Model No.	Equivalent Model No.	Image
1	RTA-JNFL-4	JANATICS Make AM40-0-FL-04	
2	RTA-JNAM-1025	JANATICS Make AM1025	
3	RTA-SMA-93	SMC Make D-A93-LUG	
4	PBE Bracket	Round Cylinder-Uni Bracket for all	
5	PCD+PC Bracket	Tie Rod Cylinder- Uni Bracket for all	
6	RTA-FT-K-08	FESTO Make (150855) SME-8-K-LED-24V	
7	RTA-FT-M-08	FESTO Make (543862) SME-8M-DS-24V-K-2,5-OE	
8	RTA-FT-MZS-08	FESTO Make (543872) SME-8M-ZS-24V-K-2,5-OE	
9	RTA-JNFL-14	JANATICS Make AM40-1-FL-04	
10	RTA-SMM-9B	SMC Make D-M9B-LUG	
11	RTA-SMM-9P	SMC Make D-M9P-LUG	



+91 85919 10242

raytech@raytechautomation.com

www.raytechautomation.com